



PROLiGHTS

EclProfile CT+

EclProfile CT+



EclProfile CT+: Overview



Luxeon-C 96x3W 6 colour
custom LEDs source (red,
green, blue, royal blue,
mint, pc amber)



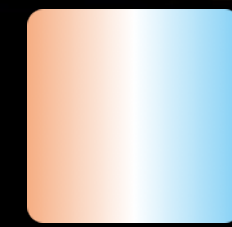
Colour gels
matching



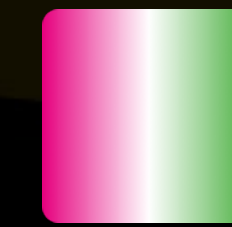
Tungsten emulation
on dimming



Multiple lenses optional
5° / 10° / 14° / 19° / 26° /
36° / 50° / 70° / zoom
15°-30° / zoom 25°-50°



White presets:
Linear CCT from
2.800 K to 10.000
K with CRI up to 97



Tint control
(+/- green)

EclProfile CT+: Accessories



Soft focus diffusion kit
ECLPRSMOOTHF1



Lens barrel
ECLPRLBK



Zoom optic
ECLPRLZ



Gel filter frame
ECLPRTPG



Gobo holder
ECLPRGH



Steel drop-in iris
ECLPRIRIS



Soft edge filter & holder kit
ECLPRSEF1



Firmware uploader kit
UPBOX2P5



Flightcase
FCLECLPR



Lens flightcase
FCLECLPRLZ

EclProfile CT+: Lens barrel



05°



10°



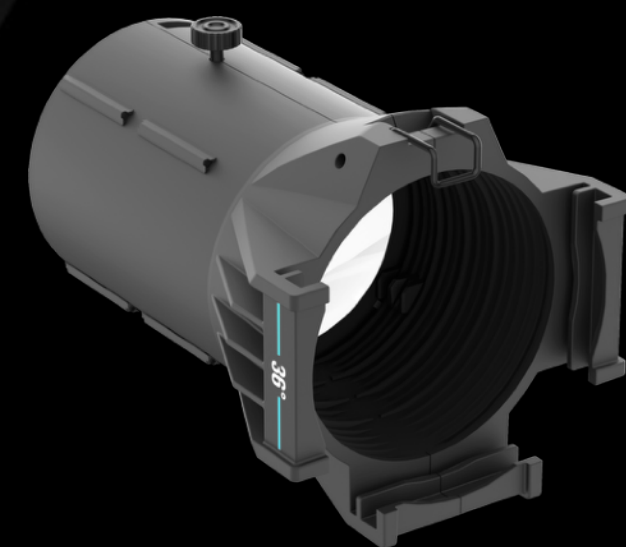
14°



19°



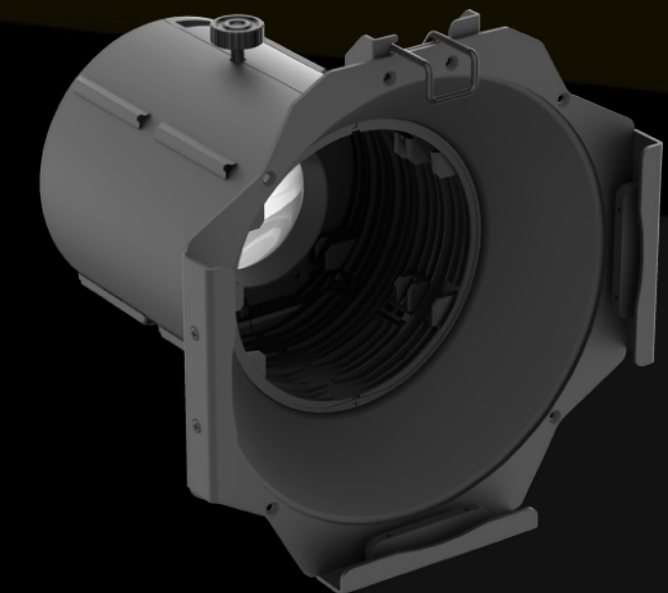
26°



36°



50°



70°

EclProfile CT+: HD zoom lens barrel



15° - 30°



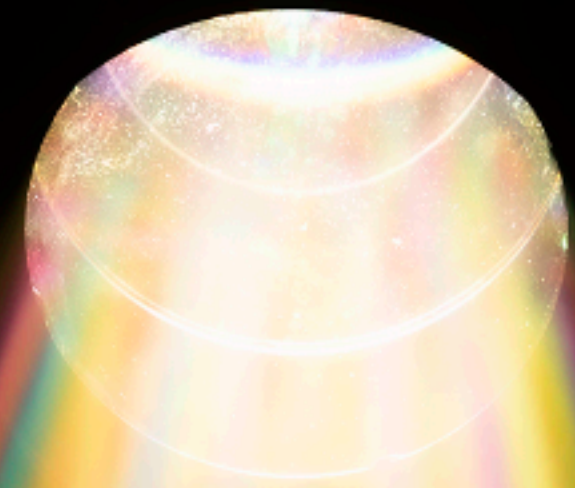
25° - 50°

EclProfile CT+: Soft focus diffusion kit

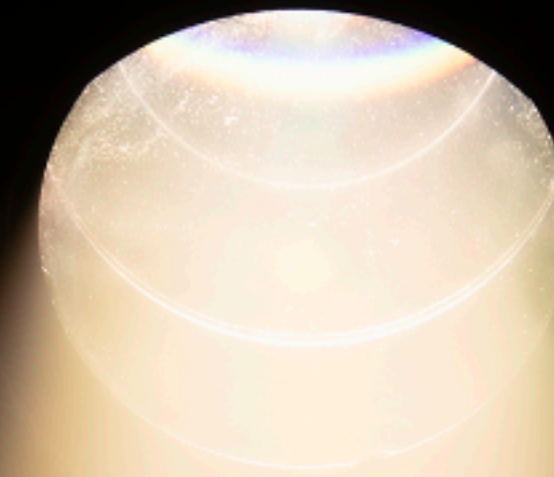


ECLPRSMOOTHF1

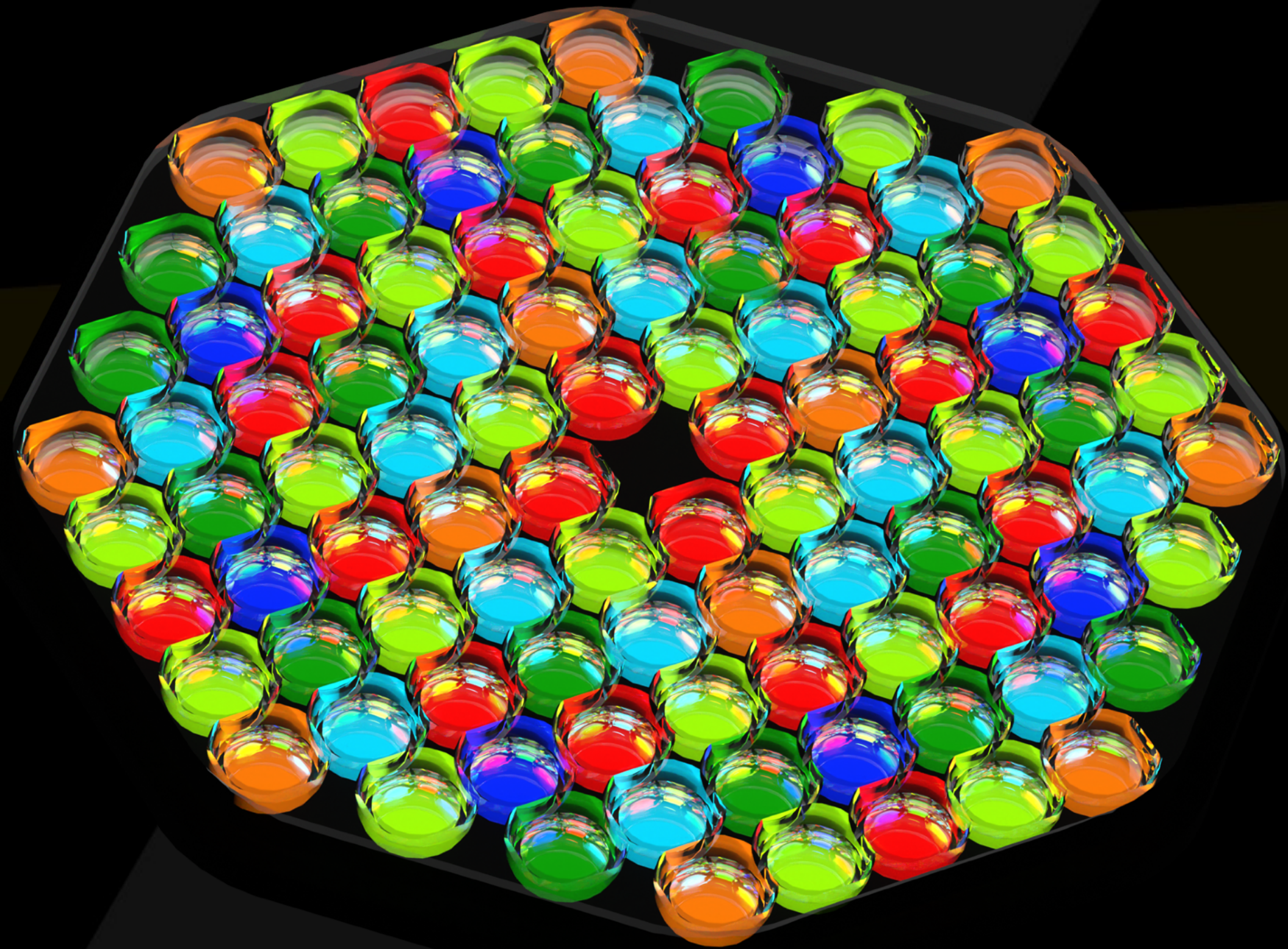
19° lens without filter



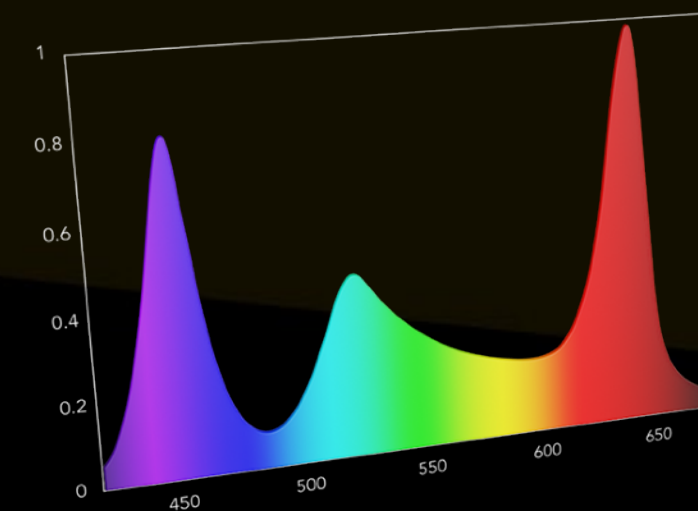
19° lens with filter



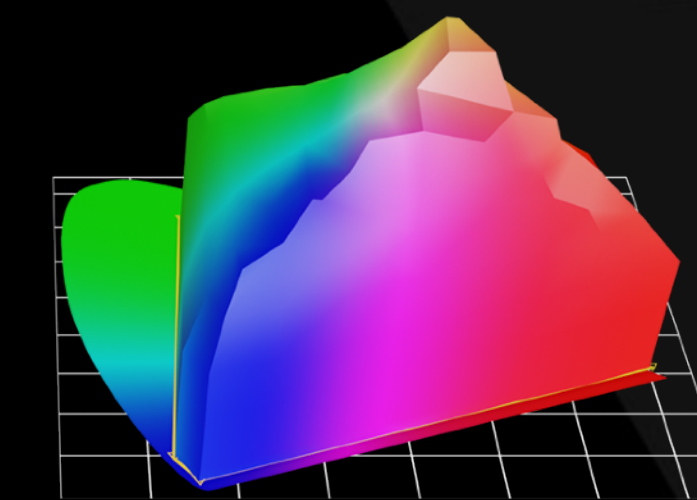
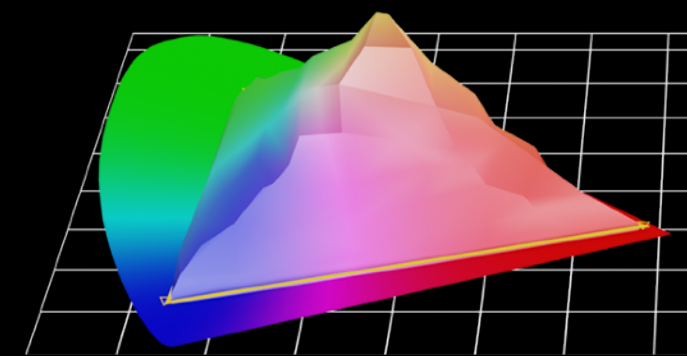
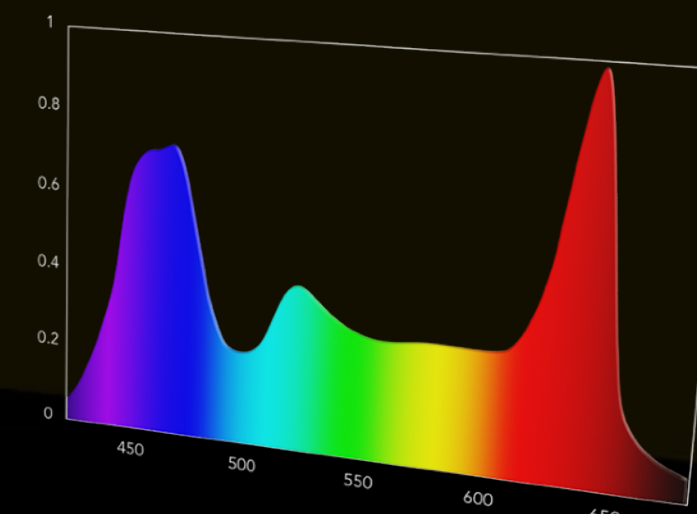
Discover the powerful
6 colour light engine



RGBW



EclProfile CT+



State-of-the-art electronics and software



CMY



RGB

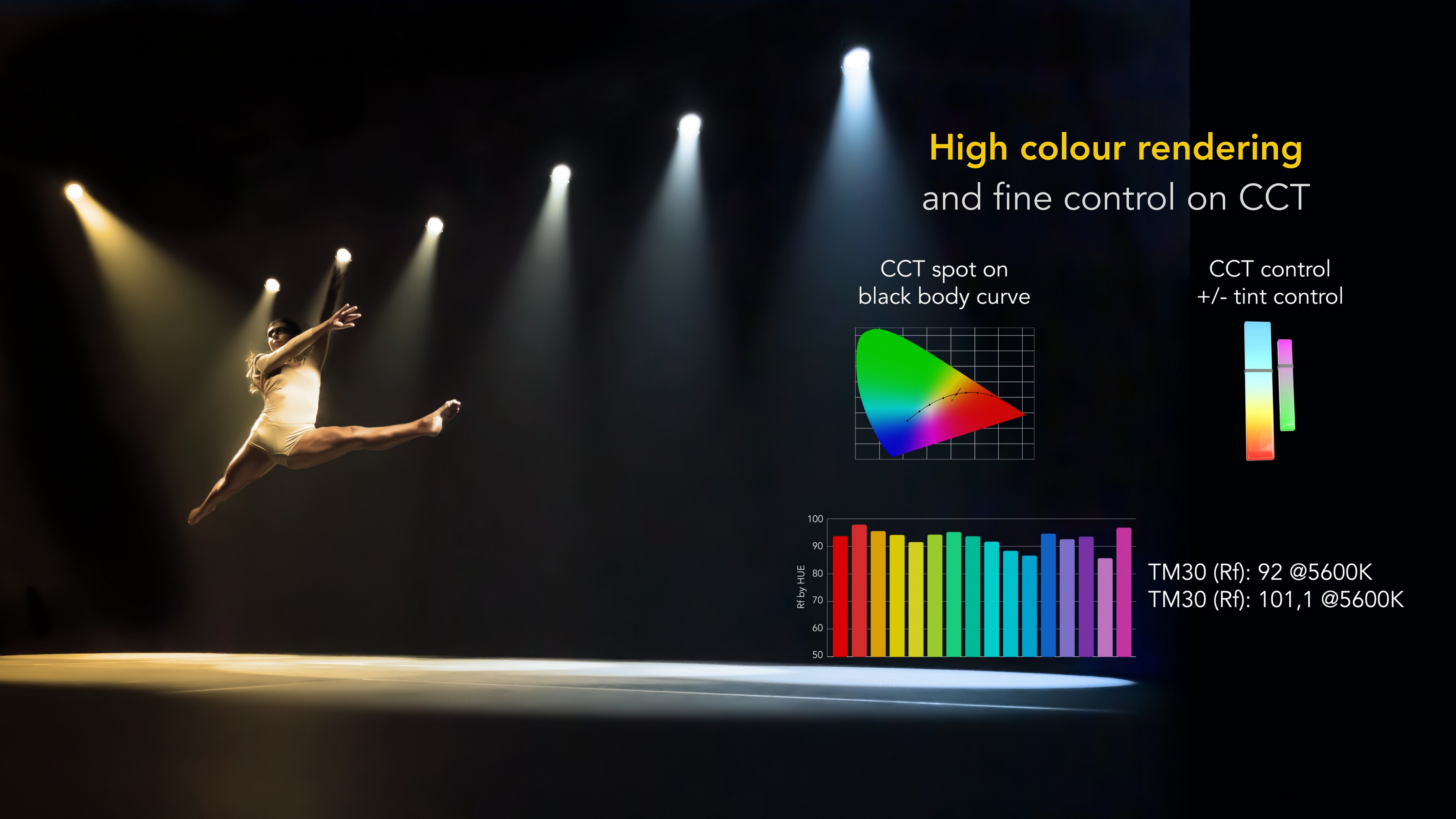


HSI



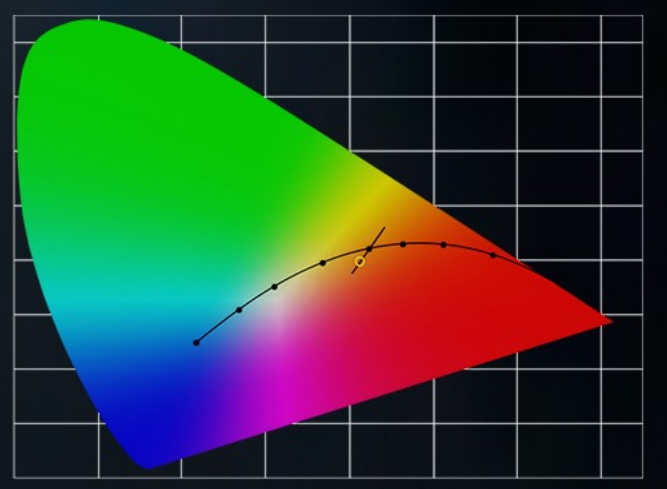
COLOUR GEL
MATCHING



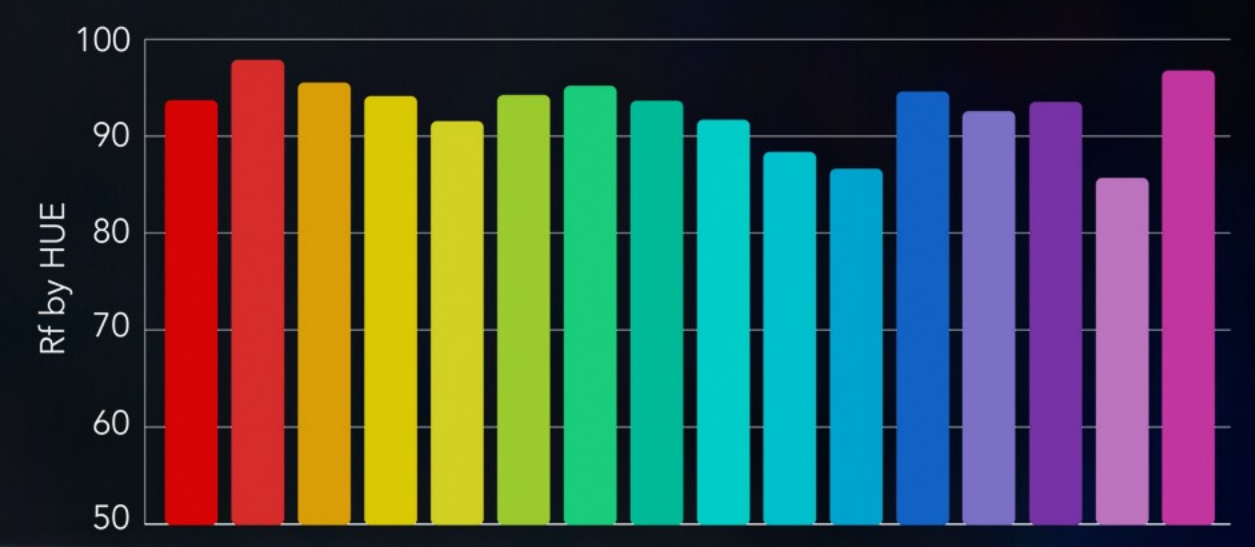
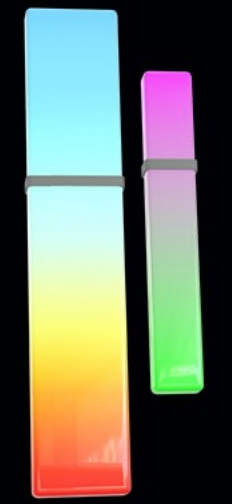


High colour rendering and fine control on CCT

CCT spot on
black body curve



CCT control
+/- tint control

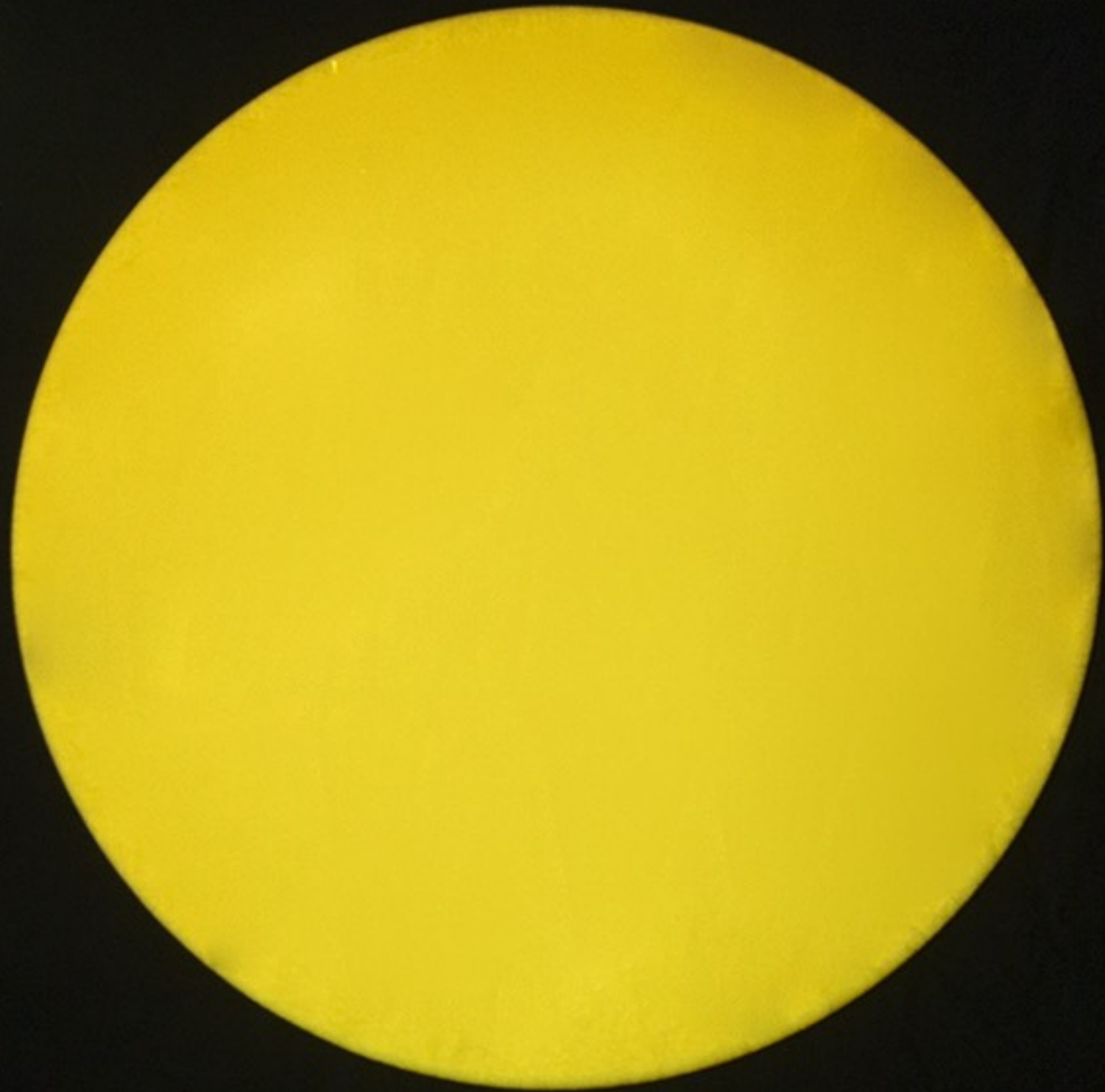


TM30 (Rf): 92 @5600K
TM30 (Rf): 101,1 @5600K

XY coordinates and RAW mode

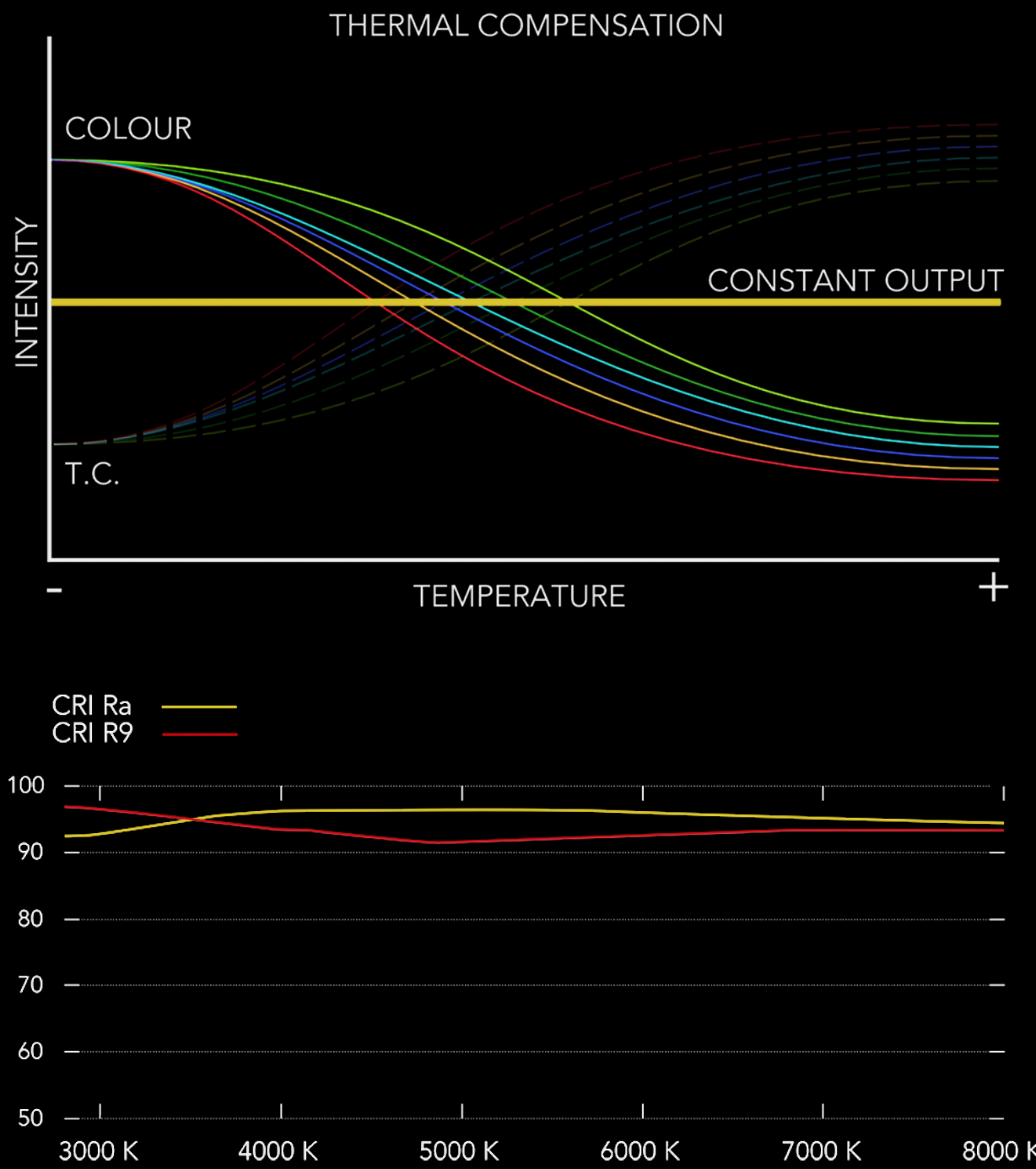
The screenshot shows a lighting control software interface. At the top, there's a 'Feature Sheet' table with columns for Name, ID Type, CID, X, Y, B, R, G, and B. Below the table is a 'Color Picker' tool with a color wheel and a vertical slider. The interface also includes various control panels for Gobo, Color, Beam, Focus, Control, Phaser, and Matriks.

Name	ID Type	CID	X	Y	B	R	G	B
ELECT-RAR_26_1	1	Feature	35340	41128	65535			





Calibration tailor-made to each individual device



HIGH QUALITY



HIGH BRIGHTNESS



User **modes**

SILENT



BALANCED



AUTO



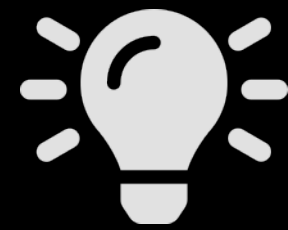
FULL





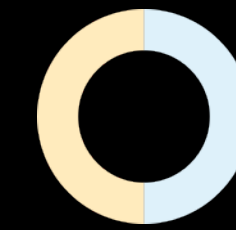
EclProfile FW

High quality Full White LED ellipsoidal available in Tungsten and Daylight versions



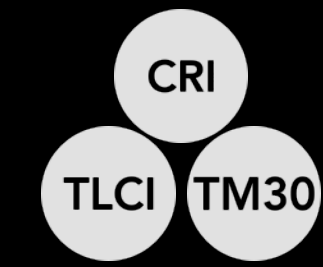
91x3W

high-power white LED

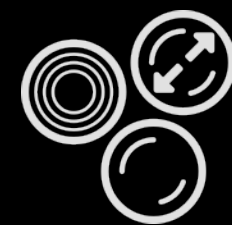


CCT

(TU) 3.200 K
(DY) 5.600 K

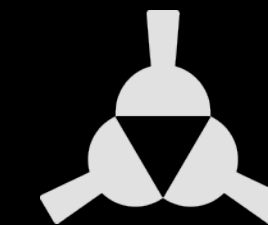


High lumen output
& superior quality of whites



Multiple lenses optional

5° / 10° / 14° / 19° / 26°
36° / 50° / 70° / zoom
15°-30° / zoom 25°-50°



3 layers blades system

and fast rehabilitation
of blade in case of out
of frame blade



Mode fan management
HIGH, AUTO & SILENT



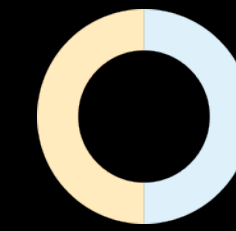
EclProfile FW VW

High quality Variable White LED ellipsoidal



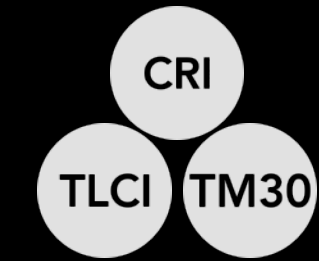
91x3W

high-power white LED

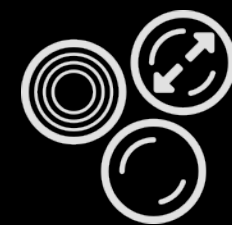


CCT

Variable from
2,700 K to 5,600 K

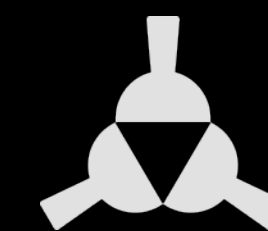


High lumen output
& superior quality of whites



Multiple lenses optional

5° / 10° / 14° / 19° / 26°
36° / 50° / 70° / zoom
15°-30° / zoom 25°-50°

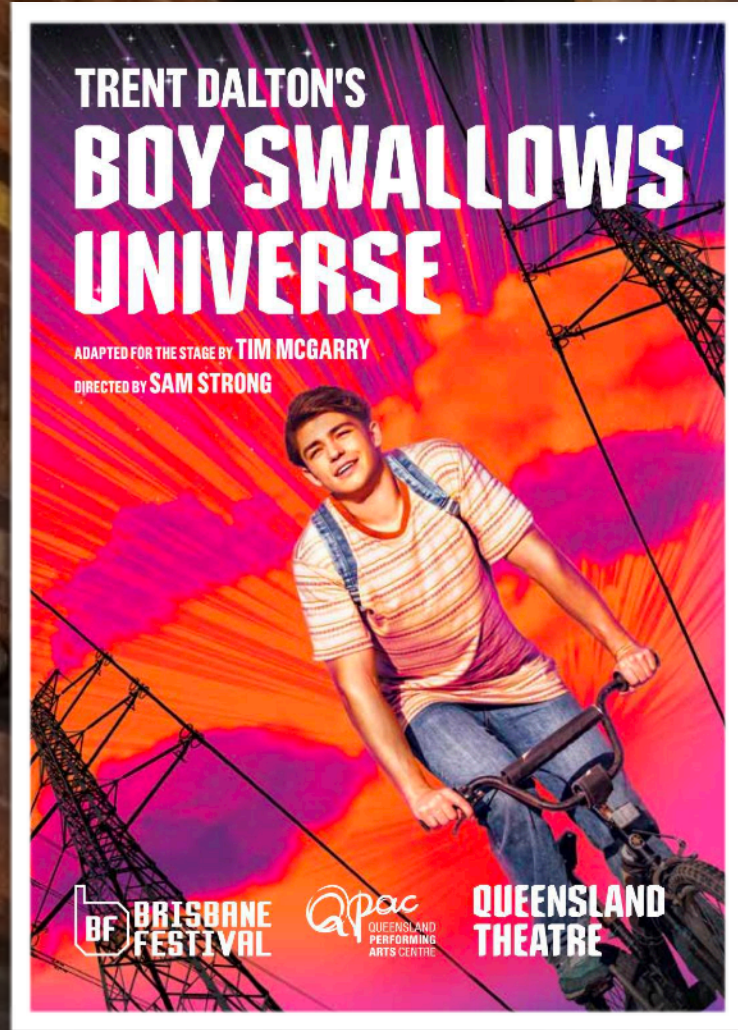


3 layers blades system

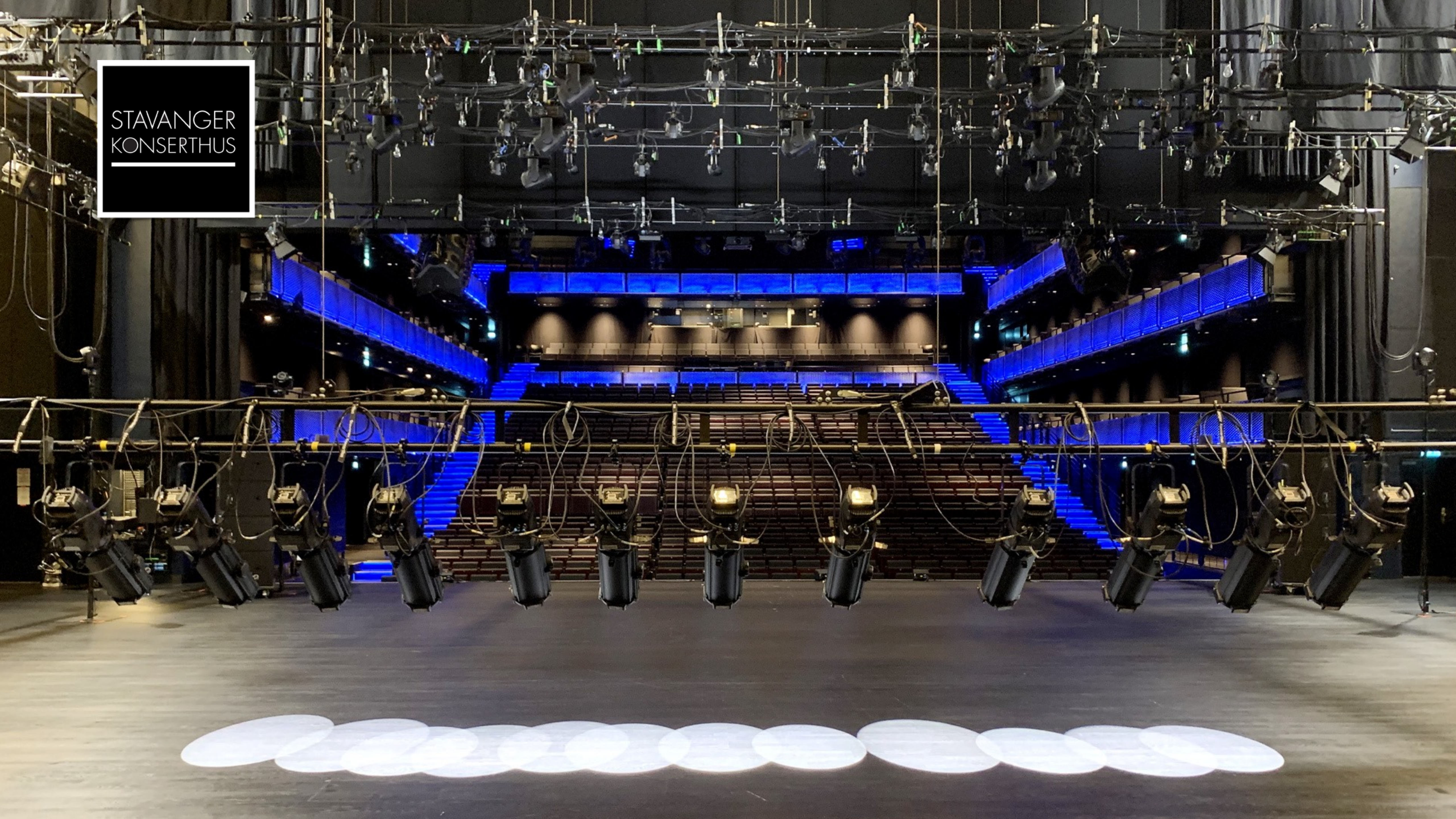
and fast rehabilitation
of blade in case of out
of frame blade



Mode fan management
HIGH, AUTO & SILENT



STAVANGER
KONSERTHUS



Product Technical literatures

Apart of the full marketing contents, we will make available all the following technical documents when the product will be officially launched to the market:



Personalities



Drawings



Photometrics



Software



Tech Docs

Personalities (libraries)

GDTF
MA2
AVOLITES
HOG4
CHAMSYS
VISTA3
ETC Eos
OBSIDIAN
CAPTURE
VECTORWORKS

Drawings

PDF
DWG 2D
DWG 3D
Skp
Revit
2D Blocks DWG

Photometrics

Full Photometric report PDF
IES files
LDT files

Software

Prolights Dialux Plug-in

Tech Docs

A4 Datasheet
DMX chart
User Manual
Safety instruction
Tender Specifications



PROLiGHTS

THANK YOU FOR WATCHING!

To find out more visit prolights.it